

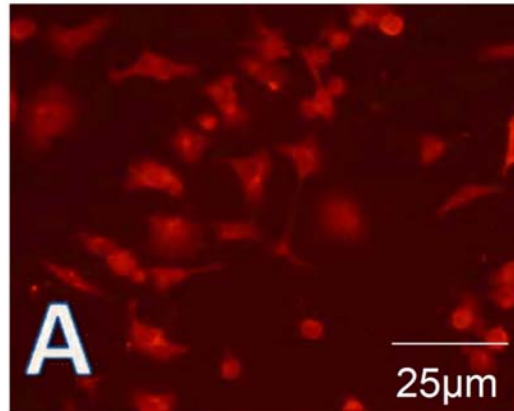
Micrographs needing magnification bars.

For more instructions about guidelines for figures, please see www.bjournal.com.br

All light and electron micrographs must contain a magnification bar with its equivalence in micrometers.

The bar is necessary because it reports the correct magnification even if the figure is amplified or reduced after the micrograph is prepared.

Below is an example of a figure with a magnification bar.



This information can be found on all micrographs together with the magnification size. See examples below.

If necessary, please contact the morphologist who took the micrographs for this information.

The publication of any paper will be stopped until the problem is resolved.

